

## Modular Intergrated Optical Transmission Multiplexer

### Model No. AT-LAN 4000



### Description

The **modular integrated optical transmission multiplexer** is created with 16E1+100M full speed Ethernet capacity of transmission interfaces. The equipment also provides various interface modules for voice, data and video services in cities and industrial districts. Its optional interfaces support multiservice transmission of large customers and customer groups such as MSEs, governmental organizations, schools and intelligent residential areas. Open and standard interfaces are applied to guarantee prompt interlinking of various devices.

### Features

- **1+1 Optical Redundancy Backup:** Protection of dual optical interface available to ensure that business will not be interrupted when one pair of optical fibres is confronted with failure. Supporting hot add/drop of optical interface, and fulfill switching without error code during hot add/drop.
- **Flexible Configuration:** 4/8/12/16E1 optical multiplexers and multiservice interfaces are derivable from main system board and different functional modules, to meet different user requirements and customizations.
- **Various Functional Modules:** User interface modules (N $\times$ 64K V.35, FV.35, FXO/FXS, E/M, RS232/RS485, and etc.), order wire module, network management module (RS232, and Ethernet Interface, etc.), and alarm output terminal module, etc. available.

#### **ANANDA Telecom Pvt. Ltd.**

Registered office : E-36, Amar Colony, Lajpat Nagar, New Delhi – 110024, INDIA

Tele Fax : +91 11 41323629, +91 93 502 57173

E-mail : [Info@andatelecomindia.com](mailto:Info@andatelecomindia.com)

URL : [www.andatelecomindia.com](http://www.andatelecomindia.com)

## Specifications

### Electrical interface card

#### G.703 Interface Card

4 channels of G.703 interface available  
DB37 Interface, to provide corresponding external  
interface through adapter

Fully compliant with ITU-T G.703 recommended  
standards

Interface Code Type: HDB3

Bit Rate: 2.048Mbit/s  $\pm$  50ppm



#### Dual V.35 Interface Card

Two channels of V.35 interface available  
Interface Electric Level: In compliance with CCITT  
V.35 standard

Physical Interface: DB25

Interface Bit Rate: 2.048Mbit/s



#### 4-Channel V.35 Interface Card

4 channels of V.35 Interface to be framed

Interface Electric Level: In Compliance with CCITT V.35  
Standard

Physical Interface: DB37

Speed of Interface:  $\geq$  64Kbit/s



#### FXO/FXS Voice Channel Interface Card

Physical interface: RJ45

FXO interface card: to provide 4-channel or 8-channel FXO  
interface connected with switch.



### ANANDA Telecom Pvt. Ltd.

Registered office : E-36, Amar Colony, Lajpat Nagar, New Delhi – 110024, INDIA

Tele Fax : +91 11 41323629, +91 93 502 57173

E-mail : [Info@andatelecomindia.com](mailto:Info@andatelecomindia.com)

URL : [www.andatelecomindia.com](http://www.andatelecomindia.com)

FXS interface card: to provide 4-channel or 8-channel FXS interface connected with ordinary telephone sets. Supports display of incoming calls. Supports billing function of inverted polarity.



**RS232 Interface Card**

Physical interface: RJ45  
 Four RS232 transmission channels available  
 Transmission Speed: 110~115.2K bps  
 Transmission Mode: Full-Duplex



**RS422/RS485 Interface Card**

Physical interface: RJ45  
 Four RS422/RS485 transmission channels available  
 Transmission Speed 110~115.2K bps  
 Transmitting Mode: full/half duplex

**Optical Interface**

Optical Source:	LD
Speed of optical interface:	155Mbps
Quantity of interface:	2(work and protection)
Output Power:	≥ -9dBm (dual fiber)
Receiver Type:	PINFET
Receiver Sensitivity:	≤ -35dBm (BER≤ 10 <sup>-11</sup> ) (dual fiber)
Type of Optical Connectors:	FC/SC
Focus Wavelength:	1310/1550 nm
Detecting equipment:	optical power meter, etc.
Optional Transmitting Distance:	0~40 km (40~120 km, to be customized)

**ANANDA Telecom Pvt. Ltd.**

Registered office : E-36, Amar Colony, Lajpat Nagar, New Delhi – 110024, INDIA

Tele Fax : +91 11 41323629, +91 93 502 57173

E-mail : [Info@andatelecomindia.com](mailto:Info@andatelecomindia.com)

URL : [www.andatelecomindia.com](http://www.andatelecomindia.com)

### Power Supply

Input Voltage: AC 220 V / DC-48 V  
 Voltage Fluctuation: 165 VAC~265 VAC or -36 VDC~-72 VDC  
 Power Consumption: ≤40 W (Subject to certain change for configuration of different interfaces)

### Physical Parameters

#### St a n d a l o n e T y p e ( 1 9 " 1 U ) :

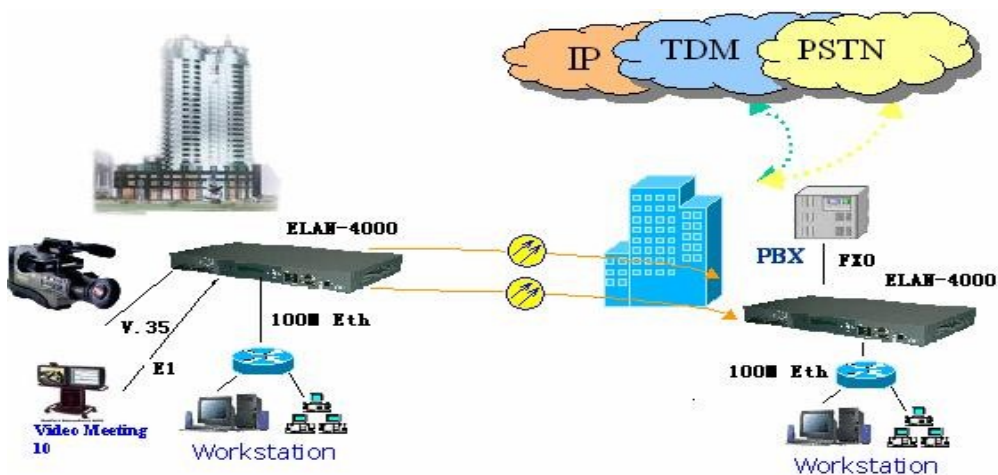
Dimension: 440 mm(W) ◇ 43.5 mm(H) ◇ 220 mm(D)  
 Weight: < 6.0 kg  
 Rack Type: EIA 19" Rack

### Environmental Requirement

Operating Temperature: -5°C ~ +40°C  
 Storage Temperature: -25°C ~ +55°C  
 Relative Humidity: ≤ 85% (30°C)  
 Atmospheric pressure: 70 ~ 106 kPa

No corrosive and solvent gas, and free from flying dust and magnetic-field interference.

### Typical Application



### ANANDA Telecom Pvt. Ltd.

Registered office : E-36, Amar Colony, Lajpat Nagar, New Delhi – 110024, INDIA

Tele Fax : +91 11 41323629, +91 93 502 57173

E-mail : [Info@andatelecomindia.com](mailto:Info@andatelecomindia.com)

URL : [www.andatelecomindia.com](http://www.andatelecomindia.com)