



*ISO 9001:2000 Certified Company*



### **AT ORCHID AM8**

The **AT ORCHID AM8**, SHDSL (Single-Paired High Speed Digital Subscriber Loop) 4-wire routers with VLAN and firewall, comply with ITU-T G.991.2 standard optimized for small to medium size business environment. The SHDSL interface provides business-class, multi-range from 64kbps to 4.608Mbps symmetric payload rates over existing copper wires.

With always on connection that DSL provides, the AT ORCHID AM8 SHDSL routers provide advanced firewall, Stateful Packet Inspection (SPI) and DoS protection, serving as a powerful firewall to protect from outside intruders of secure connection. ANDA Telecom Orchid AM 8 5221 also support IP precedence with which network packet transverse IP precedence devices priority and the priority traffic is always serviced before traditional traffic. are integrated high-end Bridging/Routing capabilities with advanced functions of Multi-DMZ, virtual server mapping, and VPN pass-through. Because of rapid growth of network, virtual LAN has become one of the major new areas in internetworking industry. The SHDSL routers support port-based VLAN and IEEE 802.1q VLAN over ATM network.

The LAN interface of AT ORCHID AM8 SHDSL 4-wire routers support 10/100 Base-T auto-sensing, auto-negotiation and auto-MDIX switching ports to meet the enterprise need. internetworking industry. The SHDSL 4-wire routers support port-based and IEEE 802.1q VLAN over ATM network.

**AT ORCHID AM8** support four ports 10Base-T /100Base-T auto-negotiation and auto-MDIX switching ports to meet the enterprise need.

The ANDA Telecom Orchid AM 8 SHDSL routers allow customers to leverage the latest in broadband technologies to meet their growing data communication needs. Through the power of ANDA Telecom Orchid AM 8 SHDSL products, you can access superior manageability and reliability.

### **Features**

- Easy configuration and management with password control for various application environments
- Efficient IP routing and transparent learning bridge to support broadband Internet services
- Virtual LANs (VLANs) offer significant benefit in terms of efficient use of bandwidth, flexibility, performance and security
- VPN pass-through for safeguarded connections
- Four 10/100Mbps Auto-negotiation and Auto-MDIX switching port for flexible local area network connectivity

**ANDA Telecom Pvt. Ltd.**

Registered office : E-36, Amar Colony, Lajpat Nagar- IV, New Delhi – 110024, INDIA

Phone : +91 11 41323629, +91 93 502 57173

E-mail : [Info@andatelecomindia.com](mailto:Info@andatelecomindia.com)

URL : [www.andatelecomindia.com](http://www.andatelecomindia.com)



*ISO 9001:2000 Certified Company*

- DMZ host/Multi-DMZ/Multi-NAT enables multiple workstations on the LAN to access the Internet for the cost of IP address
- Symmetrical data rate from 64kbps to 4.608Mbps
- Fully ATM protocol stack implementation over SHDSL
- PPPoA and PPPoE support user authentication with PAP/CHAP/MS-CHAP
- SNMP management with SNMPv1/SNMPv2 agent and MIB II
- Getting enhancements and new features via Internet software upgrade

### **Routing**

- Support IP/TCP/UDP/ARP/ICMP/IGMP protocols
- IP routing with static routing and RIPv1/RIPv2 (RFC1058/2453)
- IP multicast and IGMP proxy (RFC1112/2236)
- Network address translation (NAT/PAT) (RFC1631)
- NAT ALGs for ICQ/Netmeeting/MSN/Yahoo Messenger
- DNS relay and caching (RFC1034/1035)
- DHCP server, client and relay (RFC2131/2132)
- IP precedence (RFC 791) (Firewall router)

### **Bridging**

- IEEE 802.1D Transparent Bridging
- IEEE 802.1q VLAN
- Port-based VLAN

### **Security**

- DMZ host/Multi-DMZ/Multi-NAT function
- Virtual server mapping (RFC1631)
- VPN pass-through for PPTP/L2TP/IPSec tunneling
- Natural NAT firewall
- Advanced stateful packet inspection (SPI) firewall
- Denial of service protection
- User access control; deny certain PCs access to internet services

### **Management**

- Easy-to-use web-based GUI for quick setup, configuration and management
- Menu-driven interface/Command-line interface (CLI) for local console and Telnet access
- Password protected management and access control list for administration
- SNMP management with SNMPv1/SNMPv2c (RFC1157/1901/1905) agent and MIB II (RFC1213/1493)

**ANDA Telecom Pvt. Ltd.**

Registered office : E-36, Amar Colony, Lajpat Nagar- IV, New Delhi – 110024, INDIA

Phone : +91 11 41323629, +91 93 502 57173

E-mail : [Info@andatelecomindia.com](mailto:Info@andatelecomindia.com)

URL : [www.andatelecomindia.com](http://www.andatelecomindia.com)



*ISO 9001:2000 Certified Company*

- Software upgrade via web-browser/TFTP server

#### **ATM**

- Up to 8 PVCs
- OAM F5 AIS/RDI and loopback
- AAL5

#### **ATM QoS**

- UBR (Unspecified Bit Rate)
- CBR (Constant Bit Rate)
- VBR-rt (Variable Bit Rate Real Time)
- VBR-nrt (Variable Bit Rate Non-real Time)

#### **AAL5 Encapsulation**

- VC multiplexing and SNAP/LLC
- Ethernet over ATM (RFC 2684/1483)
- PPP over ATM (RFC 2364)
- Classical IP over ATM (RFC 1577)

#### **PPP**

- PPP over Ethernet for dynamic and static IP (RFC 2516)
- PPP over ATM for dynamic and static IP (RFC 2364)
- User authentication with PAP/CHAP/MS-CHAP

#### **WAN Interface**

- SHDSL: ITU-T G.991.2 (Annex A, Annex B)
- Encoding scheme: 16-TCPAM
- Data Rate: N x 64Kbps (N=0~36, 0 for adaptive)
- Impedance: 135 ohms

#### **LAN Interface**

- 4-port switching hub
- 10 Base-T and 100 Base-T auto-negotiation
- Auto-MDIX

**ANDA Telecom Pvt. Ltd.**

Registered office : E-36, Amar Colony, Lajpat Nagar- IV, New Delhi – 110024, INDIA

Phone : +91 11 41323629, +91 93 502 57173

E-mail : [Info@andatelecomindia.com](mailto:Info@andatelecomindia.com)

URL : [www.andatelecomindia.com](http://www.andatelecomindia.com)



*ISO 9001:2000 Certified Company*

## Hardware Interface

- WAN: RJ-11
- LAN: RJ-45 x 4
- Console port: RS232
- RST: Reset button for factory default

## Indicators

- General: PWR
- WAN: LNK, ACT
- LAN: 1, 2, 3, 4
- SHDSL: ALM

## Physical/Electrical

- Dimensions: 18.7 x 3.3 x 14.5 cm (WxHxD)
- Power: 100~240VAC
- Power consumption: 8 watts max
- Temperature: 0~45°C
- Humidity: 0%~95% RH (non-condensing)

## Memory

- 2MB Flash Memory, 4MB SDRAM

**ANDA Telecom Pvt. Ltd.**

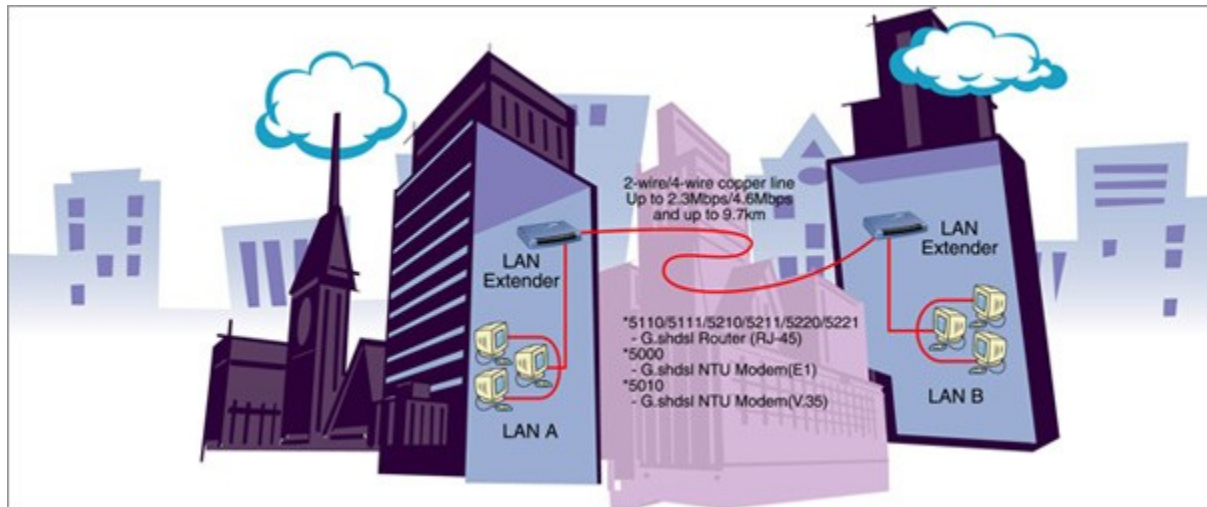
Registered office : E-36, Amar Colony, Lajpat Nagar- IV, New Delhi – 110024, INDIA

Phone : +91 11 41323629, +91 93 502 57173

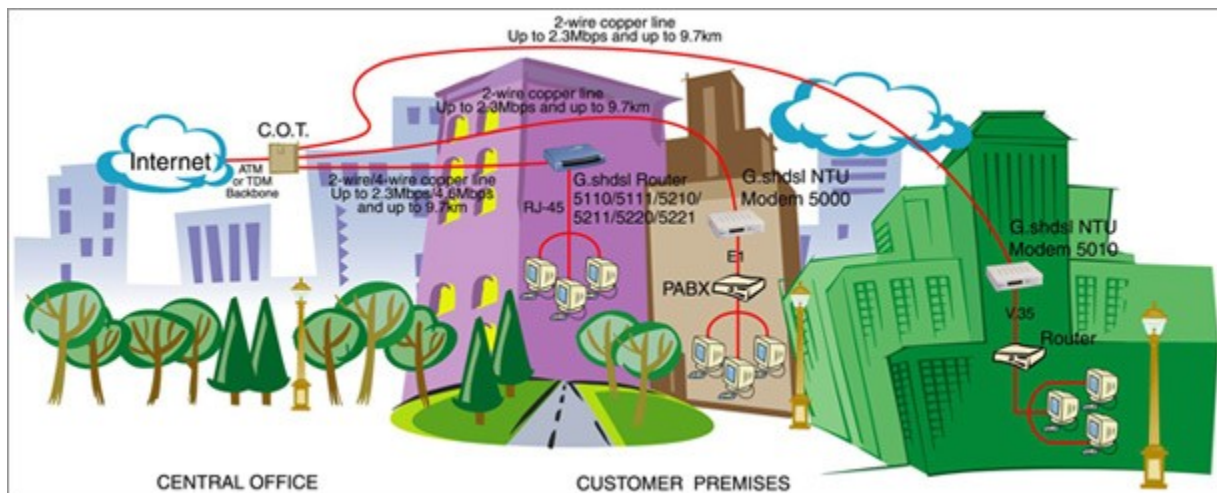
E-mail : [Info@andatelecomindia.com](mailto:Info@andatelecomindia.com)

URL : [www.andatelecomindia.com](http://www.andatelecomindia.com)

**Application I: Ethernet over SHDSL (LAN Extension)**



**Application II: Components of Leased Line Solutions for Carrier/ISP/ASP**



ANDA Telecom Pvt. Ltd.

Registered office : E-36, Amar Colony, Lajpat Nagar- IV, New Delhi – 110024, INDIA

Phone : +91 11 41323629, +91 93 502 57173

E-mail : [Info@andatelecomindia.com](mailto:Info@andatelecomindia.com)

URL : [www.andatelecomindia.com](http://www.andatelecomindia.com)