



Turning Copper into Gold

## **E1 Time Slot Multiplexer** **FE1/10-100BaseT+4/8FXO<S> Voice Bridge**

**Product model: E1-ETH-4FX**

**Product function: FE1/10-100BaseT+4/8FXO<S>**  
(providing conversion from ITU-T G.703 standard E1 to Ethernet and 4 voice )



### **Product introduction:**

This multiplexer provides conversion between ITU-T G.703 standard framing E1 interface and Ethernet interface and transmit 1-8 voice signals through E1 channel, can realize long-distance extension of phone line through E1 channel. E1 signal can be transmitted by communication equipment such as PDH fiber optical multiplexer and two LAN will become two segments in one LAN after interconnection. It is especially suitable for users of special network and can supply data and voice connection simultaneously for them through single E1 channel.

### **Product characteristic:**

- ◇ realizes long-distance monitoring of this end equipment to the far-end equipment (two-row indicating lamp, upper row indicating local status, lower row indicating far-end status);
- ◇ based on self-copyright IC;
- ◇ Ethernet interface 10/100M, half/full duplex self adaptable, supporting VLAN;
- ◇ Ethernet port supports AUTO-MDIX (crossed line and straightly connected line self-adaptable);
- ◇ provides 2 clock types: E1 master clock, E1 line clock;
- ◇ provides 3 kinds of loop-return function, namely E1 self-looping at local end, Ethernet self-looping at local end, and Ethernet being ordered to self-loop at remote end;
- ◇ has the function of pseudo-random code testing, convenient for opening of the circuit, and can be used as an error code instrument;
- ◇ E1 supports rate of  $N*64k$  ( $N=1-32$ ), which can be regulated from 64K to 2048K;
- ◇ supports 75Ω unbalanced and 120Ω balanced impedance at the same time;
- ◇ has self-reset function of Ethernet monitoring, equipment will not die;
- ◇ provides 1-4 voice connection and supports function of coming call display;
- ◇ supports function of signal transmission among all end points;
- ◇ supports mandatory configuration function from local equipment to remote equipment;

ANDA Telecom Pvt. Ltd.

Registered office : E-36, Amar Colony, Lajpat Nagar- IV, New Delhi – 110024, INDIA

Phone : +91 11 41323626, +91 93 502 57173

E-mail : [Info@andatelecomindia.com](mailto:Info@andatelecomindia.com)

URL : [www.andatelecomindia.com](http://www.andatelecomindia.com)



Turning Copper into Gold

- ◇ voice port supports O port and S port, O port connecting with exchanger and S port with user's telephone;

**Technical data:**

**E1 interface:**

Interface standard: Conforms to G.703 standard

Interface rate: N×64Kbps, N:1 32

Vibration characteristic: Satisfies G.742 and G.823 standard

Transmission capacity: 1\*E1

Clock type: internal-clock, route clock

Connector: BNC (75 Ω), RJ45 (120 Ω)

Interface impedance: 75Ω (non- balanced), 120Ω (balanced)

**10/100Base-T Interface**

Rate: 10/100M, full/duplex auto-negotiation

Protocol: Support IEEE 802.3, IEEE 802.1Q (VLAN)

MAC Address Entries: 4096 Entries

Total Memory Sizes: 64Mbits SDRAM

Physical interface: RJ45, support AUTO-MDIX

**FXS:**

Alarm voltage: 75V

Alarm frequency: 25HZ

2 line input impedance: 600Ω (hanging off)

Wastage: 40db

**FXO:**

Alarm detecting voltage: 35V

Alarm detecting frequency: 17HZ-60HZ

2 line input impedance: 600Ω (hanging off)

Wastage: 40db

ANDA Telecom Pvt. Ltd.

Registered office : E-36, Amar Colony, Lajpat Nagar- IV, New Delhi – 110024, INDIA

Phone : +91 11 41323626, +91 93 502 57173

E-mail : [Info@andatelecomindia.com](mailto:Info@andatelecomindia.com)

URL : [www.andatelecomindia.com](http://www.andatelecomindia.com)

## Operation environment

Voltage: AC180V-240V, DC-48V, DC+24V

Power Consumption: <=5 Watts

Working temperature: 0°C~50°C

Storage temperature: -40°C~+70°C

Humidity: 95%

No causticity and solvent, dust free, and no strong magnetic interference.

**Dimension** 210(W) × 140 (L) x 30(H) mm

### Ordering information:

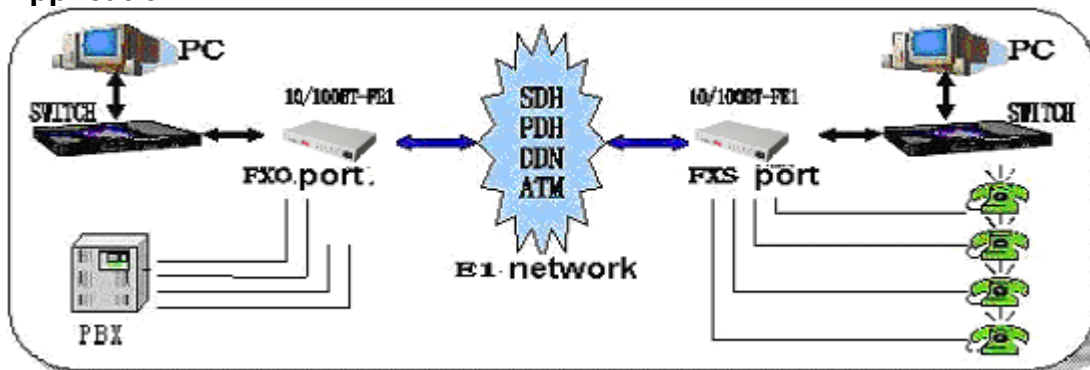
E1-ETH-4FXO(S)/AC

E1-ETH-4FXO(S)/DC48

E1-ETH-4/8FXO(S), 4 Ethernet and 1 RS 232 Port/AC

E1-ETH-4/8FXO(S), 4 Ethernet and 1 RS 232 Port/DC 48

## Application



ANDA Telecom Pvt. Ltd.

Registered office : E-36, Amar Colony, Lajpat Nagar- IV, New Delhi – 110024, INDIA

Phone : +91 11 41323626, +91 93 502 57173

E-mail : [Info@andatelecomindia.com](mailto:Info@andatelecomindia.com)

URL : [www.andatelecomindia.com](http://www.andatelecomindia.com)